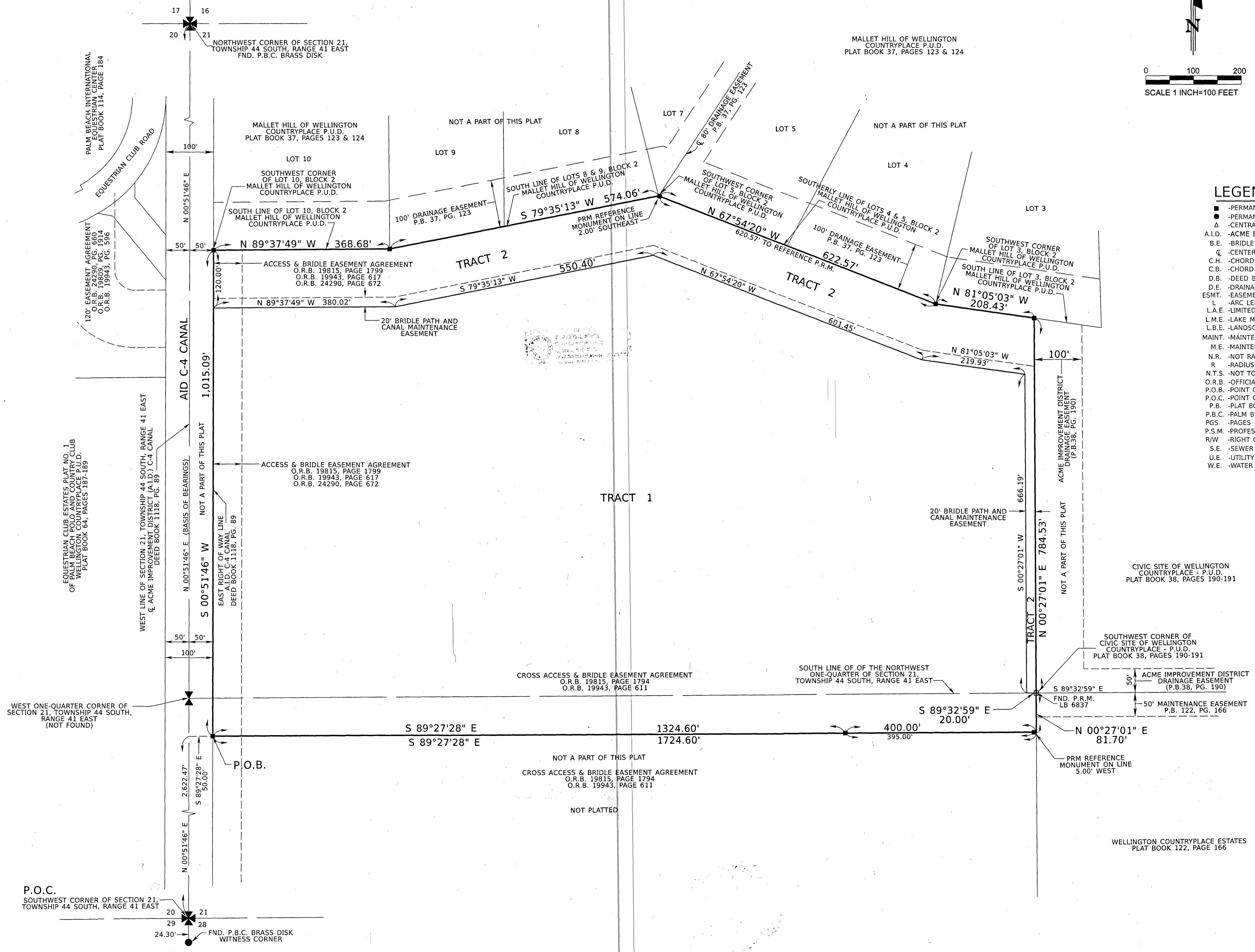
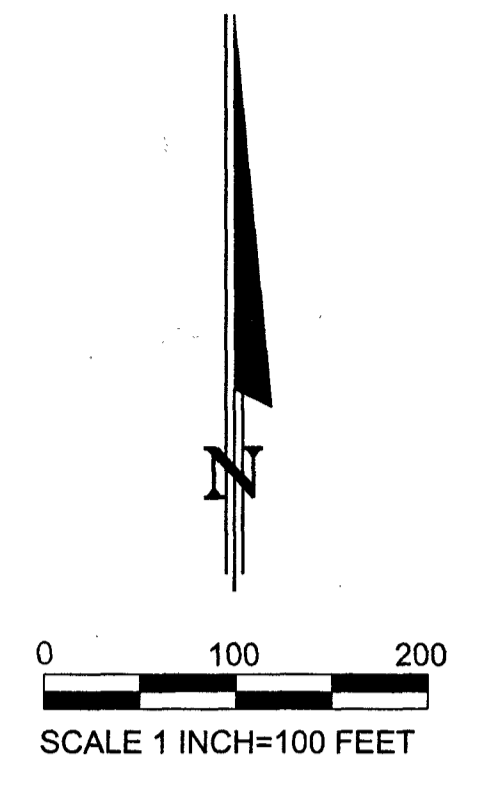


WELLINGTON COUNTRYPLACE ESTATES II
 BEING A PLAT OF A PORTION OF SECTION 21, TOWNSHIP 44 SOUTH, RANGE 41 EAST
 VILLAGE OF WELLINGTON, PALM BEACH COUNTY, FLORIDA
 IN 2 SHEETS, SHEET NO. 2
 NOVEMBER, 2024



- LEGEND:**
- -PERMANENT REFERENCE MONUMENT, LB-6837
 - -PERMANENT CONTROL POINT
 - △ -CENTRAL ANGLE
 - A.I.D. -ACME IMPROVEMENT DISTRICT
 - B.E. -BRIDLE EASEMENT
 - C -CENTERLINE
 - C.H. -CHORD
 - C.B. -CHORD BEARING
 - D.B. -DEED BOOK
 - D.E. -DRAINAGE EASEMENT
 - ESMT. -EASEMENT
 - L -ARC LENGTH
 - L.A.E. -LIMITED ACCESS EASEMENT
 - L.M.E. -LAKE MAINTENANCE EASEMENT
 - L.B.E. -LANDSCAPE BUFFER EASEMENT
 - MAINT. -MAINTENANCE
 - M.E. -MAINTENANCE EASEMENT
 - N.R. -NOT RADIAL
 - R -RADIUS
 - N.T.S. -NOT TO SCALE
 - O.R.B. -OFFICIAL RECORD BOOK
 - P.O.B. -POINT OF BEGINNING
 - P.O.C. -POINT OF COMMENCEMENT
 - P.B. -PLAT BOOK
 - P.B.C. -PALM BEACH COUNTY
 - PGS -PAGES
 - P.S.M. -PROFESSIONAL SURVEYOR AND MAPPER
 - R/W -RIGHT OF WAY
 - S.E. -SEWER EASEMENT
 - U.E. -UTILITY EASEMENT
 - W.E. -WATER EASEMENT

P.O.C.
 SOUTHWEST CORNER OF SECTION 21,
 TOWNSHIP 44 SOUTH, RANGE 41 EAST